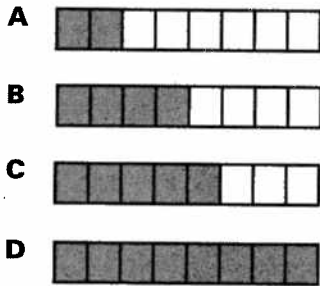


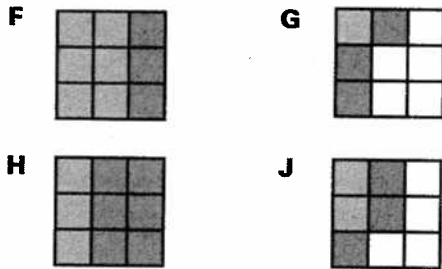


Objective 1 TEKS 6.2.A Practice

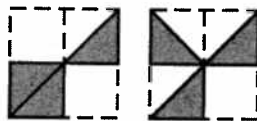
1. Jennifer needs $\frac{1}{4}$ yard of ribbon for one project and $\frac{3}{8}$ yard for another project. Each strip below represents 1 yard of ribbon. Which strip is shaded to show the total amount of ribbon that Jennifer needs?



2. Which square shows $\frac{2}{9} + \frac{1}{3}$ shaded?



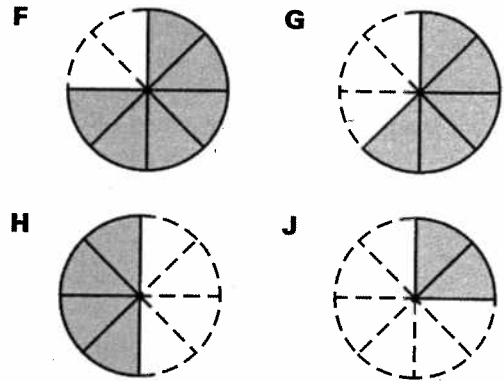
3. Yolanda is sewing triangles onto squares of fabric. The shaded parts of the drawings represent the triangles she has sewn on so far.



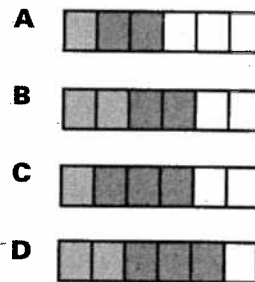
What fraction of the two squares still needs triangles?

- A** $\frac{3}{8}$ **B** $\frac{1}{2}$ **C** $\frac{3}{4}$ **D** $\frac{5}{8}$

4. The shaded part of each circle represents what is left behind. Which drawing represents $1 - \frac{1}{4}$?



5. Miguel painted $\frac{1}{6}$ of a fence and Tyler painted $\frac{1}{3}$. Each strip represents the total fence. Which strip is shaded to represent the total amount of the fence that was painted?



- 6.2.A** When you finish this page, you can check off a box on your TEKS Tracker, page 1.



**Objective 1
TEKS 6.2.C Practice**

TAKS Objectives
TEKS 6.2.C Practice

1. During this school year, Toshiro has received high scores on 7 math quizzes for every 8 math quizzes he took. If he takes 16 more quizzes, how many of them would be expected to have high scores?

- A 11
- B 12
- C 14
- D 15

2. Rachel did a survey of several students in her school about their favorite sport. She learned that 3 out of 4 students chose soccer. If there are 200 students in the school, how many students would be expected to choose soccer?

- F 18
- G 50
- H 150
- J 180

3. If a package of 20 recordable CDs costs \$16, how much do 5 of the recordable CDs cost?

- A \$4
- B \$5
- C \$8
- D \$10

4. Juanita bought some pants for \$34 and 3 equally priced T-shirts. She spent a total of \$82, not including tax. What was the price of each T-shirt?

- F \$11
- G \$12
- H \$16
- J \$27

5. If a 24-pack of canned juice costs \$16, how much do 6 of the cans of juice cost?

- A \$4
- B \$6
- C \$8
- D \$9

6. Brandon can walk 3 miles in 2 hours. How many miles can he walk in 6 hours?

- F 4
- G 9
- H 12
- J 18

7. A honeybee can fly 15 miles in 1 hour. How many miles can it fly in 40 minutes?

- A 4
- B 5
- C 6
- D 10

8. This year, 3 out of every 5 children who signed up for day camp were girls. If 25 children signed up, how many of them were girls?

Record your answer and fill in the bubbles in the grid below. Be sure to use the correct place value.

				.		
0	0	0	0		0	0
1	1	1	1		1	1
2	2	2	2		2	2
3	3	3	3		3	3
4	4	4	4		4	4
5	5	5	5		5	5
6	6	6	6		6	6
7	7	7	7		7	7
8	8	8	8		8	8
9	9	9	9		9	9

- 6.2.C** When you finish this page, you can check off a box on your TEKS Tracker, page 1.



Objective 1 TEKS 6.2.D Practice

1. If there are 32 cars in an amusement ride and about 18 riders in each car, about how many riders are on the ride?

A 50 B 60
C 300 D 600

2. The library is moving its books into a new building. The table shows the number of books of each type that library workers moved to the new building on Monday.

Books Moved on Monday	
Type of book	Number
Biographies	25
How-to	60
Reference	108
Novels	59
Short Story Anthologies	62

Which is closest to the total number of books workers moved to the new building on Monday?

F 30 G 200
H 300 J 400

3. Diego had \$399.67 in his bank account. He took out \$20.45. About how much does he have left in his account?

A \$38 B \$280
C \$370 D \$380

4. Four friends ate lunch together at a cafe. Their individual lunches cost \$3.49, \$4.13, \$3.98, and \$4.05. About how much did they spend in all?

F \$12 H \$16
G \$20 J \$24

5. Jessica picked beans in the field this summer. Today, she picked 124 pounds. If a bucket of beans holds about $18\frac{1}{2}$ pounds of beans, about how many buckets of beans did she pick today?

A 2 B 6
C 8 D 10

6. It is 140 miles from Lubbock to Odessa and 394 miles from Lubbock to San Antonio. About how much farther is it from Lubbock to San Antonio than from Lubbock to Odessa?

F 200 miles
G 300 miles
H 400 miles
J 500 miles

7. If a factory can produce 211 bicycles in 1 month, about how many can it produce in 1 year?

A 240
B 1400
C 2400
D 6000

8. Ling is cutting 2 lengths of about $3\frac{3}{4}$ feet each from a 10-foot-long board to make book shelves. About how much of the board will be left over?

F 2 ft G 4 ft
H 6 ft J 8 ft

- 6.2.D** When you finish this page, you can check off a box on your TEKS Tracker, page 1.